

榮授下級勳位爵士的香港傑出扶輪人

Eminent Hong Kong Rotarians honored with Knights Bachelor

By Herbert K. Lau (劉敬恒) (Rotary China Historian)

1 November 2015



The insignia of a Knight Bachelor devised in 1926

The title of Knight Bachelor is the basic rank granted to a man who has been knighted by the monarch but not inducted as a member of one of the organized orders of chivalry; it is a part of the British honours system. The award originated in the Middle Ages. Knights Bachelor are the most ancient sort of British knight (the rank existed during the 13th-century reign of King Henry III), but Knights Bachelor rank below knights of chivalric orders.

Criteria

Knighthood is usually conferred for public service; amongst its recipients are all male judges of His/Her Majesty's High Court of Justice in England. It is possible to be a Knight Bachelor and a junior member of an order of chivalry without being a knight of that order; this situation has become rather common, especially among those recognized for achievements in entertainment.

Honorifics and post-nominal letters

A man who is knighted is formally addressed as "Sir [First Name] [Surname]" or "Sir [First Name]" and his wife as "Lady [Surname]".

Knights Bachelor may prefix "Sir" to their forenames, and wives of Knights may prefix "Lady" to their surnames. There are no post-nominal letters associated with the honour nor can it be awarded to women. (They are appointed DBE --- Dames Commander of the Order of the British Empire, instead.)

Insignia

Until 1926, Knights Bachelor had no insignia which they could wear, but in that year King George V issued a warrant authorizing the wearing of a badge on all appropriate occasions by Knights Bachelor; this badge (*see photo on Page 1*) is worn on the left side of the coat or outer garment (*see Kenneth Fung's photo*). Measuring 2+3⁄8 inches (60 mm) in length and 1+3⁄8 inches (35 mm) in width, it is described in heraldic terms as follows:

Upon an oval medallion of vermilion, enclosed by a scroll a cross-hilted sword belted and sheathed, pommel upwards, between two spurs, rowels upwards, the whole set about with the sword belt, all gilt.

In 1974, Queen Elizabeth II issued a further warrant authorizing the wearing on appropriate occasions of a pendant badge (*see photo on Page 3*), slightly smaller, and in miniature. In 1988, a new certificate of authentication, a knight's only personal documentation, was designed by the College of Arms.

Equivalence

There is no female counterpart to Knight Bachelor. The lowest knightly honour that can be conferred upon a woman is Dame Commander of the Most Excellent Order of the British Empire (DBE), which is one rank higher than Knight Bachelor (being the female equivalent of KBE or Knight Commander of the Most Excellent Order of the British Empire, which is the next male knightly rank above Knight Bachelor).

Only citizens of the British Commonwealth realms can be created Knights Bachelor; people of other nationalities are generally made honorary KBEs.

下級勳位爵士 (Knight Bachelor)，中文通稱「爵士勳銜」，是英國榮譽制度中的一種勳位。此勳位雖然由君主授勳為騎士，但它並不屬於騎士團勳章之一種。下級勳位爵士是英國最古老的一種騎士，最早於英格蘭國王亨利三世（1207年—1272年）在位時就已經出現，但它卻是各種騎士勳位之中最低等的。下級勳位爵士只授予男性，女性的基點是較高一級的「爵級司令勳章」 (Dame Commander of the Most Excellent Order of the British Empire, DBE)。

資格 敬語

下級勳位爵士一般授予對社會事業有貢獻之人士。此外，所有出任英格蘭及威爾斯高等法院的男性法官均會獲授此勳銜。一如其他爵級勳位，下級勳位爵士均可在自己的英文名前加上「Sir」頭銜（中文即在姓名後加上「爵士」頭銜），不過他們卻不可以在自己的姓名後加上勳銜縮寫。然而，有些下級勳位爵士卻會錯誤地習慣以「Kt」（注意不是「KT」，「t」為小寫）為勳銜縮寫，在一般場合置於自己的姓名後。值得注意的是，在某一些場合下，下級勳位爵士卻是可以破例在姓名後加上「Kt」。例如，若果有一位下級勳位爵士在後來獲冊封為從男爵的話，為了釐清其身份，那樣便或可破例准許他在姓名後加上「Kt」樣式。另一方面，在某一些正式文件中，下級勳位爵士之姓名後亦會加上「Kt」或「Knight」（即「騎士」）之字樣。

授勳人士所獲勳銜如不屬於爵級騎士勳章，是沒有資格冠上「爵士」頭銜的。但如果該等在日後進一步獲爵級騎士勳章（一如下級勳位爵士），那便可以在名稱加上「爵士」頭銜。凡不是英國國王的子民（意指不是英國或不奉他為元首的國家公民），即使取得爵級勳銜，亦只作榮譽性質，不可使用「爵士」或「女爵士」頭銜，但這類人士仍可以在姓名後加上勳章縮寫。

樣式

在 1926 年以前，下級勳位爵士一直也沒有自己的佩章。直至在當年，英王喬治五世才頒發一道授權令，准許下級勳位爵士在一般場合扣上佩章（圖樣見第 1 頁）。根據授權令，佩章須掛於左胸前的大衣或禮服上（見周竣年/馮秉芬/羅保照片），而佩章則為 2 $\frac{3}{8}$ 吋長，1 $\frac{3}{8}$ 吋闊，描述如下：

佩章呈橢圓形，底色為硃砂色，外沿部份以渦卷條形裝飾鑲邊。另有一條屬於寶劍的腰帶圍繞置中的寶劍，形成內沿。寶劍乃交叉柄，而且上鞘，劍柄之圓球在佩章上方。另寶劍左右各置一踢馬刺，馬刺上的小齒輪亦朝向上方。以上描述之事物全部鍍上金色。

在 1974 年，英女王伊莉莎白二世發出了另一道授權令，准許下級勳位爵士在適當的場合掛上吊墜綬章（見下圖），而吊墜綬章則為掛在左胸口的佩章之微型版。到 1988 年，下級勳位爵士又獲得到新版本的「認證書」，該證狀是唯一的證明書，由英國紋章學院設計。



Dr. The Honourable Sir Tsun-Nin Chau (周焯年爵士)

CBE, OStJ, *HonLLD (HKU)*, MA (*Oxon*), LLB (*Oxon*), JP



香港扶輪社現職社員

Active Member, Rotary Club of Hong Kong

Dr. The Honourable Sir Shouson Chow (周壽臣爵士)

HonLLD (HKU), JP



香港扶輪社現職社員

Active Member, Rotary Club of Hong Kong

Sir William Woodward Hornell (康寧爵士)

CIE, *HonLLD (HKU)*, MA (*Oxon*)



香港扶輪社 1930-1932 年度創社社長
Charter President 1930-1932, Rotary Club of Hong Kong

Dr. The Honourable Sir Harry Fang Sin-Yang (方心讓爵士)

GBM, CBE, *HonDSc (HKOU)*, *HonDSocSc (HkPolyU)*, *HonLLD (CUHK)*, *HonLLD (HKU)*,
MCH.ORTH, FRACS, FACS, FRCPE, FRCSE, MSc (*Liverpool*), MBBS (*HKU*), JP



香港扶輪社榮譽社員
Honorary Member, Rotary Club of Hong Kong

Dr. The Honourable Sir Kenneth Fung Ping-Fan (馮秉芬爵士)

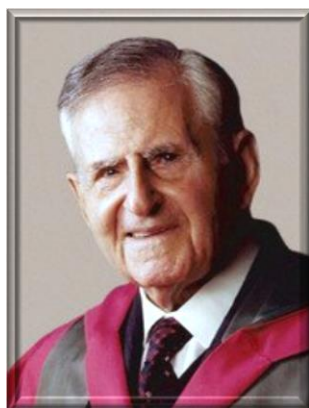
CBE, KStJ, *HonDSocSc (HKU)*, *HonLLD (CUHK)*, JP



香港扶輪社 1949-1950 年度社長
President 1949-1950, Rotary Club of Hong Kong
國際扶輪 345 地區 1961-1962 年度總監
Rotary International District 345 Governor 1961-1962

Sir Horace Kadoorie (賀理士·嘉道理爵士)

CBE, *HonDSocSoc (HKU)*



九龍扶輪社榮譽社員
Honorary Member, Rotary Club of Kowloon, Hong Kong

Dr. The Honourable Sir Robert Hormus Kotewall (羅旭龢爵士)

CMG, *HonLLD (HKU)*, JP



香港扶輪社現職社員

Active Member, Rotary Club of Hong Kong

Dr. The Honourable Sir Man-Kam Lo (羅文錦爵士)

CBE, *HonLLD (HKU)*, JP



香港扶輪社 1934-1935 年度社長

President 1934-1935, Rotary Club of Hong Kong

Dr. The Honourable Sir Rogerio Hyndman Lobo (羅保爵士)

CBE, *HonLLD (HKU)*, JP

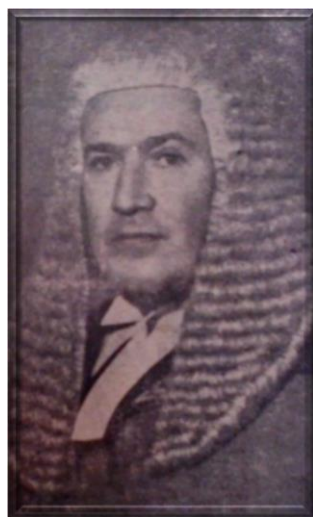


香港扶輪社榮譽社員

Honorary Member, Rotary Club of Hong Kong

The Honourable Sir Alasdair Duncan Atholl MacGregor (麥理高爵士)

CStJ, KC, MA (*Edinburgh*), BA (*Oxon*)



香港扶輪社榮譽社員

Honorary Member, Rotary Club of Hong Kong

Dr. The Honourable Sir Henry Edward Pollock (普樂爵士)

HonLLD (HKU), KC, QC, JP



香港扶輪社現職社員

Active Member, Rotary Club of Hong Kong

Dr. The Honourable Sir Michael Graham Ruddock Sandberg (沈弼爵士)

CBE, HonLLD (HKU), JP



九龍扶輪社榮譽社員

Honorary Member, Rotary Club of Kowloon, Hong Kong

Dr. The Honourable Sir Run Run Shaw (邵逸夫爵士)

GBM, CBE, *HonD (Zhejiang)*, *HonLLD (Oxford)*, *HonDBA (PolyHK)*, *HonDLitt (HKBC)*,
HonDHum (SUNY), *HonDSc (CityPolyHK)*, *HonDLitt (Sussex)*,
HonDSocSc (East Asia), *HonDSocSc (CUHK)*, *HonLLD (HKU)*



九龍扶輪社 1966-1967 年度社長
President 1966-1967, Rotary Club of Kowloon, Hong Kong



1978 年 3 月 7 日

邵逸夫在倫敦白金漢宮接受英國女王伊莉莎白二世冊封爵士後，與夫人黃美珍（右）和女兒邵素雲合照。

7 March 1978 -- Run Run Shaw was invested Knight Bachelor by Queen Elizabeth II at Buckingham Palace, London. Accompanying were Lady Lily Shaw (right), and daughter Dorothy Shaw.

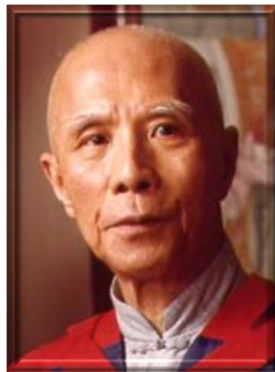
The Honourable Sir William Edward Leonard Shenton



香港扶輪社創社社員/理事 1930
Charter Member & Director 1930, Rotary Club of Hong Kong

Dr. The Honourable Sir Shiu-Kin Tang (鄧肇堅爵士)

CBE, KStJ, *HonLLD (HKU)*, JP



香港扶輪社現職社員
Active Member, Rotary Club of Hong Kong

Dr. The Honourable Dato Seri Paduka Sir Ti-Liang Yang (拿督楊鐵樑爵士)

GBM, SPMB, *HonLLD (PolyHK)*, *HonDLitt (HKU)*,
HonLLD (CUHK), FCI Arb, LLB (UCL), JP



香港扶輪社 1983-1984 年度社長
President 1983-1984, Rotary Club of Hong Kong



Knights Bachelor in Chronological Order

- (1) 1924 – Sir Henry Edward Pollock
- (2) 1926 – Sir Shouson Chow
- (3) 1931 -- Sir William Woodward Hornell
- (4) 1933 -- Sir William Edward Leonard Shenton
- (5) 1935 – Sir Alasdair Duncan Atholl MacGregor
- (6) 1938 – Sir Robert Hormus Kotewall
- (7) 1948 -- Sir Man-Kam Lo
- (8) 1956 – Sir Tsun-Nin Chau
- (9) 1964 – Sir Shiu-Kin Tang
- (10) 1971 -- Sir Kenneth Fung Ping-Fan
- (11) 1978 -- Sir Run Run Shaw
- (12) 1984 -- Sir Rogerio Hyndman Lobo
- (13) 1986 -- Sir Michael Graham Ruddock Sandberg
- (14) 1988 -- Sir Ti-Liang Yang
- (15) 1989 – Sir Horace Kadoorie
- (16) 1996 -- Sir Harry Fang Sin-Yang



The Buckingham Palace, London, United Kingdom