

Rotarians served the Executive Council
of the British Crown Colony Hong Kong
By Herbert K. Lau (劉敬恒) (Rotary China Historian)
1 February 2015



The Executive Council (行政局) of the British Crown Colony Hong Kong government before 1 July 1997 was “the cabinet” presided by the Governor of Hong Kong (香港總督). It was analogous to other Executive Councils in the British Commonwealth such as the Federal Executive Council of Australia, the Executive Council of New Zealand, and the Privy Council of the United Kingdom.

The first ex-officio members were the Colonial Secretary (輔政司) and the Colonial Treasurer (庫務司) in the 1840s. The Attorney General (律政司) was added in the 1850s.

Later, well-known community leaders were invited to serve as members or councillors (議員), usually more than 10 persons. Members of the Executive Council were appointed by the Governor of Hong Kong and were divided into two categories: “official” (meaning currently holding official positions) (官守) and “unofficial” (非官守).

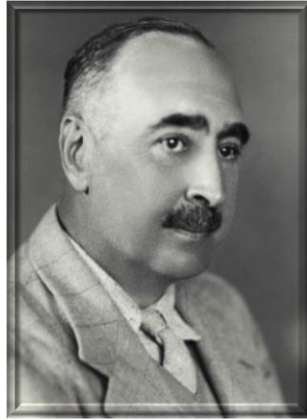
In 1949, the Executive Council had 5 ex-officio members: Commander-in-Chief of the British Forces in Hong Kong (駐港英軍三軍司令) (until 1993), Chief Secretary (布政司), the Attorney General (律政司), the Financial Secretary (財政司), and the Secretary for Chinese Affairs (華民政務司). There might be the Commissioner of Labour (勞工處處長), while an “official” was not an ex-officio member. In addition, there were 6 “unofficial members” appointed: the chief manager of the Hongkong and Shanghai Banking Corporation (香港上海滙豐銀行), the Tai-Pan of Jardine Matheson (怡和洋行), a solicitor, two barristers, and a physician. In later years, more unofficial members were appointed who were representing various interests from the Colony.

All important decisions must be approved by the Governor in conjunction with the Executive Council prior to implementation. In 1994 the title “Senior Member” or “Senior Unofficial Member” (首席非官守議員) was changed to “Convenor” (召集人), when Md. Lydia Dunn (鄧蓮如) was succeeded in the post by Md. Rosanna Wong (王荳鳴).

Members of the Executive Council need to abide by the same “secrecy system” and “collective responsibility system” as the British cabinet: that is, all members must keep the meeting process confidential, and after the policy is decided, all members must support the policy.

香港總督郝德傑爵士

Sir Andrew Caldecott, Governor of Hong Kong
GCMG, KBE, KStJ, LLD, FRAS, FRSA, MA, BA



行政局主席 1935-1937

President of the Executive Council 1935-1937

Charter President 1929-1930, Rotary Club of Kuala Lumpur, Federated Malay States

護理香港總督修頓爵士

Sir Wilfrid Thomas Southorn
Officer Administering the Government
KCMG, KBE, CMG, *Hon*LLD (*HKU*), MA (*Oxon*), BA (*Oxon*)



行政局主席 1935 年 5 月至 9 月/11 月至 12 月

President of the Executive Council May-Sept/Nov-Dec 1935

香港扶輪社榮譽社員

Honorary Member, Rotary Club of Hong Kong

嘉薛地太平紳士

The Honourable Philip Stanley Cassidy
CBE, JP



行政局非官守議員 1951-1952

Executive Council Unofficial Member 1951-1952

香港扶輪社現職社員

Active Member, Rotary Club of Hong Kong

周竣年爵士

Dr. The Honourable Sir Tsun-Nin Chau

Kt, CBE, OStJ, *HonLLD (HKU)*, MA (*Oxon*), LLB (*Oxon*), JP



行政局首席華人非官守議員 1946-1959 (委任)

Executive Council Senior Chinese Unofficial Member 1946-1959 (appointed)

香港扶輪社現職社員

Active Member, Rotary Club of Hong Kong

周壽臣爵士

Dr. The Honourable Sir Shouson Chow
Kt, *HonLLD (HKU)*, JP



議政局(行政局) 首席華人非官守議員 1926-1936
Executive Council Senior Chinese Unofficial Member 1926-1936
香港扶輪社現職社員
Active Member, Rotary Club of Hong Kong

方心讓爵士

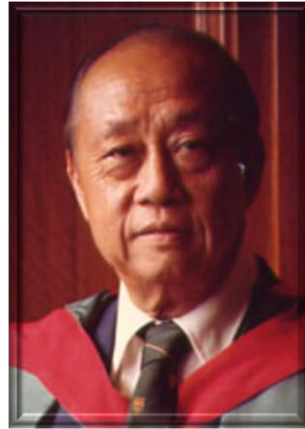
Dr. The Honourable Sir Harry Fang Sin-Yang
Kt, GBM, CBE, *HonDSc (HKOU)*, *HonDSocSc (HkPolyU)*, *HonLLD (CUHK)*, *HonLLD (HKU)*,
FRACS, FACS, FRCP (Edinburgh), FRCS (Edinburgh), MSc (Liverpool), MBBS (HKU), JP



行政局非官守議員 1978-1983
Executive Council Unofficial Member 1978-1983
香港扶輪社榮譽社員
Honorary Member, Rotary Club of Hong Kong

馮秉芬爵士

Dr. The Honourable Sir Kenneth Fung Ping-Fan
Kt, CBE, KStJ, *HonDSocSc (HKU)*, *HonLLD (CUHK)*, JP



行政局非官守議員 1962-1972
Executive Council Unofficial Member 1962-1972
香港扶輪社 1949-1950 年度社長
President 1949-1950, Rotary Club of Hong Kong
國際扶輪 345 地區 1961-1962 年度總監
Rotary International District 345 Governor 1961-1962

何承天太平紳士

The Honourable Edward Ho Sing-Tin
SBS, OBE, ARIBA, FHKIA, BA(AS) (*HKU*), JP



行政局非官守議員 1991-1992
Executive Council Unofficial Member 1991-1992
九龍扶輪社 1986-1987 年度社長
President 1986-1987, Rotary Club of Kowloon, Hong Kong

羅旭龢爵士

Dr. The Honourable Sir Robert Hormus Kotewall
Kt, CMG, *Hon*LLD (HKU), JP



議政局(行政局) 首席華人非官守議員

1929/1930/1931/1932/1933/1934/1935/1936-1941

Executive Council **Senior Chinese** Unofficial Member

1929/1930/1931/1932/1933/1934/1935/1936-1941

香港扶輪社現職社員

Active Member, Rotary Club of Hong Kong

郭贊太平紳士

The Honourable KWOK Chan
CBE, KStJ, JP



行政局非官守議員 1959-1960

Executive Council Unofficial Member 1959-1960

香港扶輪社 1951-1952 年度社長

President 1951-1952, Rotary Club of Hong Kong

李鵬飛博士

Dr. The Honourable Allen Lee Peng-Fei
CBE, *HonDEng (HKPoly)*, *HonLLD (CUHK)*, BS (*Michigan*), JP



行政局非官守議員 1985-1992
Executive Council Unofficial Member 1985-1992
大埔扶輪社榮譽社員
Honorary Member, Rotary Club of Tai Po, Hong Kong

羅文錦爵士

Dr. The Honourable Sir M. K. Lo
Kt, CBE, *HonLLD (HKU)*, JP



行政局非官守議員 1946-1959
Executive Council Unofficial Member 1946-1959
香港扶輪社 1934-1935 年度社長
President 1934-1935, Rotary Club of Hong Kong

羅保爵士

Dr. The Honourable Sir Rogerio Hyndman Lobo
Kt, CBE, *HonLLD (HKU)*, JP



行政局非官守議員 1978-1985
Executive Council Unofficial Member 1978-1985
香港扶輪社榮譽社員
Honorary Member, Rotary Club of Hong Kong

普樂爵士

Dr. The Honourable Sir Henry Edward Pollock
Kt, *HonLLD (HKU)*, KC, QC, JP



議政局(行政局) 首席非官守議員 1921-1926/1926-1941
Executive Council **Senior** Unofficial Member 1921-1926/1926-1941
香港扶輪社現職社員
Active Member, Rotary Club of Hong Kong

The Honourable Sir William Edward Leonard Shenton



議政局(行政局)非官守議員 1927/1928-1936
Executive Council Unofficial Member 1927/1928-1936
香港扶輪社創社社員 1930
Charter Member 1930, Rotary Club of Hong Kong

譚惠珠博士

Dr. The Honourable Maria Tam Wai-Chu
GBM, CBE, *Hon*LLD (CUHK), LLB (London), JP



行政局非官守議員 1983-1991
Executive Council Unofficial Member 1983-1991
吐露港扶輪社榮譽社員
Honorary Member, Rotary Club of Tolo Harbour, Hong Kong

唐炳源博士

Dr. The Honourable Tang Ping-Yuan
CBE, *Hon*LLD (CUHK), BSc (MIT), BSc (Tsing Hua), JP



行政局非官守議員 1967/1968-1971
Executive Council Unofficial Member 1967/1968-1971
無錫扶輪社創社社長 1937-1938
Charter President 1937-1938, Rotary Club of Wusih, China
上海扶輪社現職社員 1946-1949
Active Member 1946-1949, Rotary Club of Shanghai, China

泰利太平紳士

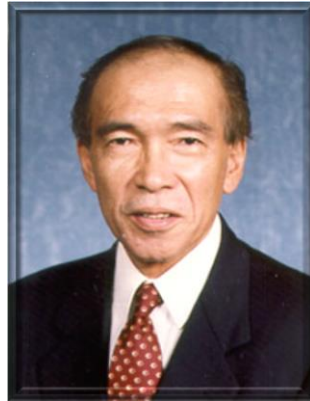
The Honourable Charles Edward Michael Terry
CBE, CStJ, JP



行政局非官守議員 1956-1961
Executive Council Unofficial Member 1956-1961
香港扶輪社現職社員
Active Member, Rotary Club of Hong Kong

黃宏發太平紳士

The Honourable Andrew Wong Wang-Fat
OBE, MPA (*Syracuse*), BA (*HKU*), JP



行政局非官守議員 1991-1992

Executive Council Unofficial Member 1991-1992

沙田扶輪社現職社員

Active Member, Rotary Club of Shatin, Hong Kong



Hong Kong Armorial Bearings 1943-1959