

中文版在第 12-15 頁

無錫扶輪社創社副社長 -- 李克樂醫學博士

無錫第一所西醫院創建者兼院長

Wusih Rotarian Dr. Claude Marshall Lee, M.D.

Founder and Head of the First Western Hospital in Wusih

By Herbert K. Lau (劉敬恒) (Rotary China Historian)

1 September 2017



Dr. Claude Marshall Lee (李克樂醫學博士), M.D. (1882-1967), was an American medical missionary of The Episcopal Church who established the first western hospital, St. Andrew's Hospital (無錫普仁醫院), in Wusih (*Wuxi*) County, Kiangsu (*Jiangsu*) Province of the Ch'ing Empire (大清國江蘇省無錫縣) in 1908. This was the forerunner of nowadays Wuxi No. 2 People's Hospital (無錫市第二人民醫院). Claude was also two times the founding Vice-President of the Wusih Rotary Club (無錫扶輪社), in 1937 and in 1947 respectively.

Vice-President of the “two times” Wusih Rotary Club

Wusih was a county in southern Kiangsu Province, Republic of China (中華民國江蘇省無錫縣) since 1912, about 90 miles away from Shanghai (上海) on the Shanghai-Nanking Railway (滬寧鐵路), along which were the famous scenic spots Tai Hu Lake (太湖) and Wei Chien Hill (惠泉山). The County had a population of over one million including the suburbs. During the dynasty of the Ch'ing Empire (大清國) (1636–1912), cotton and silk production flourished in Wusih. Trade increased with the opening of ports to Shanghai in 1842, and Chinkiang (*Zhenjiang*) (鎮江) and Nanking (*Nanjing*) (南京) in 1858. Wusih became a center of the textile industry of the nation. Textile mills were built in 1894 and silk reeling establishments known as “filatures” were built in 1904. Wusih was remained the regional center for the waterborne transport of grain.

On 27 February 1937, the Soochow Rotary Club (吳縣扶輪社) had a picnic to Wusih. One of its members, C. Z. Tsai (蔡稚岑), a Wusih native, invited 16 of the local community leaders to join the gathering. In the course of the banquet, the Soochow Rotarians encouraged to form a new Rotary Club in Wusih. All present agreed on the proposal and requested Soochow Rotary Club to be the sponsor. On 12 March 1937, the provisional club was organized. Later on 11-13 April 1937 in Nanking where the second annual conference of the 81st District, Rotary International, was held and the 16 provisional Rotary Club members attended. The participation from Wusih was well appreciated. On 5 May 1937, the organization of the Wusih Rotary Club closed with the list of 24 charter members. Official application for membership was then sent to Rotary International through the Governor Dr. Fong Foo-Sec (鄭富灼博士) of the 81st District. The Club decided to have their regular weekly meetings on every Wednesday at 6 p.m. at the premises of the Ching Foong Cotton Spinning and Weaving Mills, No. 3, Shek Pe Hong, Wusih (無錫縣石皮巷三號慶豐紡織印染廠).

Dr. Claude Marshall Lee was elected the First Vice-President (*see photo on Page 6*). He was the Founder in 1908 and Superintendent of the St. Andrew's Hospital, Wusih. His Rotary classification was "Hospital".

On 16 June 1937 Wusih Rotary Club was duly elected a member of Rotary International with the Charter No. 4321 granted. Wusih Rotary Club would have become a full-fledged one were it not for the hostilities which started about a month before the scheduled Charter Day. But all the same it was quite active during that period of formation and organization.

Regrettably, before the Charter was received and Wusih Rotary Club was able to hold the presentation celebration, there came the Second Sino-Japanese War outbreak. It was a military conflict initiated by the Imperial Japan's full scale aggression to the Republic of China (中華民國) from 7 July 1937 until Japan's surrender on 2 September 1945. It began with the Marco Polo Bridge Incident (河北省宛平縣蘆溝橋事變) in which a dispute between the Japanese and the Chinese troops escalated into a battle. It is known in the Chinese History as the "War of Resistance against Imperial Japan" (中國抗日戰爭). After the Marco Polo Bridge Incident on 7 July 1937 in Peiping (*Beijing*) (北平), within a few months the Imperial Japanese troops quickly captured and occupied all key Chinese ports and industrial centers in the northern and eastern China, including the state capital Nanking and the nearby Wusih County. Rotary activities in these localities were seriously disturbed and damaged, resulting the suspension or adjournment of the clubs, numerous "refugee Rotarians" exiled and many resided temporarily in the International Settlement of Shanghai (上海公共租界) or the British Crown Colony Hong Kong (英國殖民地香港). These two places were still the British and/or American controlled territories which meant the "safety zones" before the Pacific War outbreak in December 1941. Wusih Rotary Club was one of the "refugee clubs". Of the 24 Wusih Rotarians, 18 moved to Shanghai, 1 to Tientsin (*Tianjin*) (天津), and 1 to America, with 4 only remained staying in Wusih.

Claude was one of the four who stayed behind in Wusih, because it was his professional obligation and duty in healing the wounded and sick by maintaining the hospital operation in order even during the wartime. However, the Hospital was eventually put under the Japanese military authority though Claude was ordered to carry on his professional service.

For more than one year, the Charter for Wusih Rotary Club was still had no chance to be presented. On 12 January 1939, District 97-98 Governor Yen Te-Ching (顏德慶博士) reported to Rotary International giving this explanation:

The Charter for the Wusih Club came some time ago, but the hostilities broke out right after they have made an elaborate program to receive it. I have had a chat with President Tang of that Club and he felt that the members prefer to wait till their return to that city, when a still bigger celebration will be held to give the Club fresh momentum. I think that they are quite correct in that decision.

The War situation carried on and even worse. In December 1941, the Imperial Japan declared hostility with the United States and her allies. The Pacific War began, and the communication with Rotary International in the United States was disconnected. Eventually, Rotary International decided to officially terminate the membership on 31 December 1943 of all Rotary clubs located in the Chinese territories where were occupied by the Japanese troops.

However, Claude's Rotary life and the Wusih Rotary Club he founded were not yet completely given a full stop. In 1945, the Second World War ended with the victory of the Allies, and the Japanese Empire was defeated to surrender. On 10 March 1947, Claude and other 24 former Rotarians and new recruits gathered in Wusih and decided the revival of the Wusih Rotary Club. Claude was once again elected as the Vice-President. At that time, his profession remained no change as the Superintendent of the St. Andrew's Hospital, while his Rotary classification was still "Hospital". On April 8, the Club was admitted again to Rotary International with the Charter No. 4321 granted. Regret that Claude had to leave Wusih in October the same year due to the heart failure of his wife Mary Willoughby Duke Lee (Slaughter) (史曼麗). After 40 years of service in China, Claude returned home in the United States.

On 1 October 1949, the new Communist China was established, but was hostile to the United States because of the outbreak of the Korean War on 25 June 1950. Communications with Rotary International in the United States were soon interrupted. As a result, Rotary International decided to officially terminate again the membership of Wusih Rotary Club on 21 December 1950, and thus gave Rotary in Wusih a full stop.

Founder and Head of St. Andrew's Hospital, Wusih

Wuxi City Archives (無錫市檔案館) today is keeping some old photos of St. Andrew's Hospital, Wusih (the forerunner of nowadays Wuxi No. 2 People's Hospital). More than 100 years ago in 1908, the American medical missionary Dr. Claude M. Lee founded the first western medical clinic with only 2 assistants in this Wusih County of the Imperial China. Being the head in the following 40 years, Claude developed this small clinic into the first and the major western hospital where he was the superintendent as well as the principle surgeon.

Claude Marshall Lee was born on 17 June 1882 in Hume, Fauquier County, Virginia, U.S.A. He was the son of Revd. Henry Bedinger Lee and Lucy Johnston (Marshall) Lee, and was a direct descendant of Richard Henry Lee---a signer of the Declaration of Independence, and of Chief Justice John Marshall. Claude was educated in the University of Virginia (UVA) School of Medicine in 1900 and received his doctorate in medicine in 1905. After graduation, he was an

intern at the Naval Station Great Lakes Hospital, Chicago, Illinois. In March 1906, Claude was sent by the American Church Mission as a medical missionary to the land of the Ch'ing Empire--the Imperial China which was far and mysterious. The purpose was to establish a hospital in Wusih County upon the request by Gouverneur Frank Mosher (慕高文), President of the American Church Mission in Wusih, The Episcopal Church. The 24 years old Claude brought along his newly married wife, Mary Willoughby Duke Lee who was also a medical missionary, and study Mandarin first for a year at the Soochow Chinese Language School. The Eastern Kingdom had become the most important station on their journey of life and to whom had ultimately spent 40 years there.

In March 1907, Claude arrived in Wusih and began the medical establishment. In order to facilitate the work, Claude tried to get in touch with the local gentry. With their assistance, Claude actively prepared for various matters in the new clinic. On the other hand, another Chinese friend introduced him to rent an old house to start medical practice. Because of his novel treatment, the curative effect was remarkable, and the whole city was sensational.

Under the cooperation of local gentry, the piece of land for building the new clinic was rented in 1908. By funding of the Church, a three-room clinic was built. The central room was for dispensary, and two rooms on both sides were allocated for waiting and consulting of male and female patients, respectively. A small room behind the women's room was used for general treatment and dressing. The small room behind the men's room was for injection and vaccination. Reception counter at the entrance was also served for registration. Claude was the head physician working together with 2 doctors while the clinic housed with 5 simple beds. Since The Episcopal Church in Wusih was called St. Andrew's Church, therefore to be the same group, this new clinic was named "St. Andrew's Dispensary" (*see photo on Page 7*). Grand opening was held on March 16, with celebration well attended by the local government officials as well as Church leaders from the Shanghai Diocese.

Later on, the clinic was expanded and the name was changed to "St. Andrew's Hospital" which was the only hospital in Wusih at that time, and its business volume was quite heavy. The average number of patients treated each year was more than 20,000, and there was a shortage of medical personnel, equipment and wards. In addition to handling the administrative affairs, Claude also had to inspect the wards, to perform surgery, to receive delivery, to attend special cases and to pay home visits, etc.

Under all these difficult conditions, Claude overcame different problems and gradually developed various hospital affairs. In 1912, the American Church Mission raised donations from the United States to build new wards. It was completed in 1913 and was the most innovative building in Wusih of the era. The new complex was a two-storey building with 4 general wards and 4 special wards housing a total of 60 beds. (*see photo on Page 8*)

Various facilities and equipment in St. Andrew's had also been perfected. The operating room and X-Ray room had been established behind the new ward, and medical condition was improved. The newly-designed operating room had greatly improved the working environment, so that surgery could be performed in better hygiene. The betterment gave the chances for more than 200 operations performed within one year. Concurrently, Claude was the principle

surgeon who was the first physician to carry out Western medical surgery in Wusih. A total of 66 general anesthesia operations were performed within one year; lower abdominal surgery and upper and lower extremity surgery were performed with appendectomy, intestinal perforation laparotomy, femoral hernia repair, and ectopic pregnancy laparotomy, etc. Claude was meticulous about medical treatment and had been well received by the medical profession.

In 1914, an American medical missionary, Sister Annie Brown, was assigned to the Hospital to in-charge of nursing. In order to solve the problem of nursing staff shortage, St. Andrew's Hospital School of Nursing was founded in 1918 (the forerunner of nowadays Wuxi Higher Health Vocational Technology School in Jiangsu Province 無錫衛生高等職業技術學校), and Annie Brown was the School Superintendent. On the other hand, Claude also hired doctors of various fields. In the following 10 years, the Hospital entered a period of development of fully equipped, and the number of medical personnel gradually increased.

In the late 1918 of the First World War, Claude was sent by the American Red Cross to go to the 8th Wing of the Siberian Czech Army as a Major Medical Officer. After the War ended in 1919, he returned to St. Andrew's Hospital and resumed his office as the superintendent. In the summer of that year, cholera in urban and rural areas of Wusih was popular. The Hospital set up reed sheds to treat the patients with saline injection. Many patients were healed and that made Claude's reputation rose.

In 1931, St. Andrew's Hospital purchased the first unit of Siemens X-Ray machine in the city, and the Hospital built a new ward for the X-Ray services. Completed in March 1933, the Hospital held a grand event to celebrate its 25th anniversary. The first floor of the new building was allocated as a surgical ward, the second floor for medical ward, and the third floor was the nursing school classrooms. The total beds was increased to 115.

In 1936, Claude successfully carried out the first thoracoplasty operation in Wusih.

In July 1937, the War of Resistance Against Japanese Aggression broke out. In October, Wusih was repeatedly bombed by the Japanese Air Force. A bomb fell into the Hospital, but fortunately it did not explode. The Hospital was unable to continue its services. And so, it was declared to be dissolved and to be closed, and only Claude stayed behind as the guardian. When hostilities reached the Wusih area, Claude and Dr. Wood, as well as two nurses, Miss Grier and Miss Glenn, evacuated to Shanghai. At the request of the American Embassy in the Capital Nanking, they went to Nanking on 19 April 1938 to help reducing the burden on the missionary doctors at the Nanking University Hospital (金陵大學鼓樓醫院).

In the summer of 1938, Claude returned to Wusih. The Hospital was resumed in August and was only Claude alone on duty. After the resumption of business, medical staff returned to work gradually. By 1940, the Hospital's work was restored to a standard of more than 30,000 outpatients. In the same year, the establishment of ophthalmology was the earliest one among the general hospitals of the city.

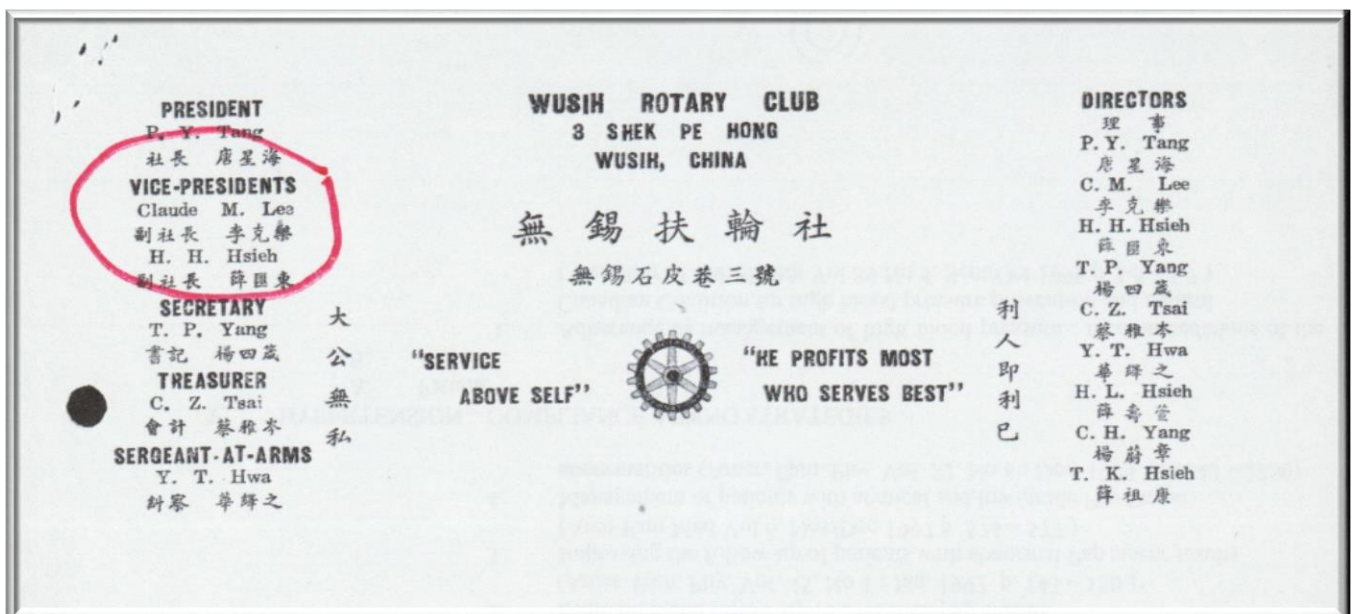
The Imperial Japan declared war to the United States, so the Pacific War broke out in December 1941. Because the St. Andrew's Hospital was an American property, it was then captured by the Japanese gendarmerie. But the Hospital was still operating with the Chinese

staff, as a private enterprise, with consent of the American Church Mission. Claude's residence was also occupied by Japanese soldiers. He was interned in his home but was allowed to carry on his work until April 12, when he was evacuated to Shanghai where he had freedom in the Shanghai International Settlement and was well treated. In June, Claude was permitted to return to the United States aboard the exchange ship S.S. Gripsholm together with many released missionaries from other cities of China. This was the longest time that Claude and his wife Mary left Wusih for five years.

On 14 August 1945, the Second World War ended with the victory of the Allies, and the Japanese Empire announced its willingness to accept unconditional surrender. In January 1947, Claude and Mary returned to Wusih from the United States to resume his duty of hospital superintendent. During the 40th anniversary celebration of St. Andrew's Hospital, in recognition of Claude's 40 years of medical service to the public in Wusih, the local government conferred him the title of "Honorary Citizen".

Unfortunately in October the same year, Mary had a sudden heart failure of which made Claude the only option to tender his resignation to Bishop William Payne Roberts (羅培德主教) of the Shanghai Diocese, and decided to return to the United States. On October 20, the Hospital held a grand farewell party for this highly respected and beloved couple. On October 23, all the doctors and nurses gathered at the train station to see them off. Before the departure, Claude donated his savings of US\$2,000 to finance three doctors from the St. Andrew's Hospital to advance their study in the United States.

Dr. Claude Marshall Lee passed away on 20 December 1967, aged 85, and is buried in Saint John's Episcopal Church Cemetery, Warsaw, Richmond County, Virginia, U.S.A.





李克樂的童年照片 *The American boy Claude Marshall Lee*



1908年無錫普仁診所 *St. Andrew's Dispensary, Wusih, 1908*



無錫普仁醫院大門 (1930 年) *Main entrance of St. Andrew's Hospital, Wusih (1930)*



無錫普仁醫院病房樓 *St. Andrew's Hospital ward building*



李克樂博士在無錫普仁醫院主刀的第一台手術
Dr. Claude M. Lee in-charge of the first operation at St. Andrew's Hospital, Wusih



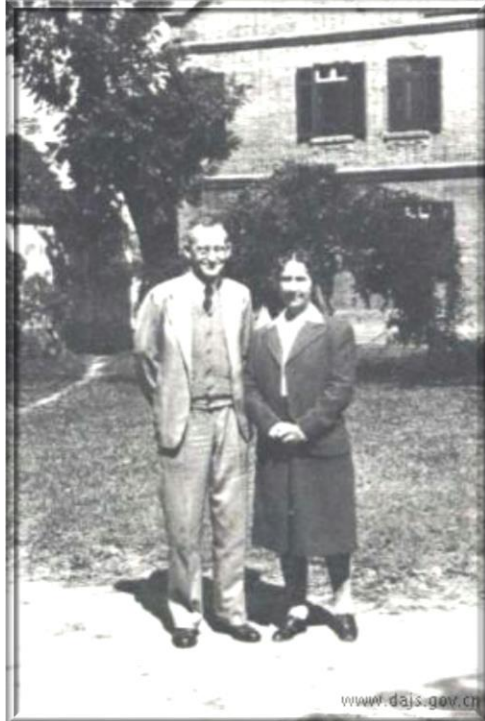
李克樂博士為截肢病人定做的鞋子
Dr. Claude M. Lee made the special shoes for amputation patient



1935 年普仁醫院護士學校第六屆畢業紀念，前排右一為李克樂院長
The 6th Graduation in 1935 of the St. Andrew's Hospital School of Nursing, Superintendent Lee sitting at R1.



李克樂院長（前中座手抱小女孩）和普仁醫院的醫護職員合影
Superintendent Claude M. Lee (front center sitting) and St. Andrew's Hospital staff team



1947 年李克樂博士伉儷惜別無錫 Dr. & Mrs. Claude Marshall Lee leaving Wusih in 1947



1947 年普仁英語研究班歡送李克樂院長（後排左二）暨夫人（前中座）返美留影
Farewell group photo of the St. Andrew's Hospital English language class taken with Superintendent Lee (back row L 2) and Mrs. Mary Lee (front center sitting) before their departure to the United States in 1947.

無錫扶輪社創社副社長 -- 李克樂醫學博士

無錫第一所西醫院創建者兼院長

李克樂醫學博士 (Dr. Claude Marshall Lee, M.D.) (1882-1967)，是一位美國聖公會 (The Episcopal Church) 醫療宣教師。1908 年他在大清國江蘇省無錫縣建立了第一家西醫院——無錫普仁醫院 (Saint Andrew's Hospital)，這是當今無錫市第二人民醫院的前身。李克樂還是無錫扶輪社 (Wushh Rotary Club) 分別於 1937 年和 1947 年的兩度創社副社長。

無錫扶輪社的「兩次」創社副社長

自 1912 年以來，無錫一直是中華民國江蘇省的南部縣。沿滬寧鐵路距離上海以西約 90 英里，著名風景名勝區有太湖和惠泉山。上世紀 30 年代該縣包括郊區人口超過一百萬。大清國 (1636-1912 年) 皇朝期間，棉紡和絲綢的生產在無錫縣蓬勃發展。隨著 1842 年 (道光二十二年) 通向上海以及 1858 年 (咸豐八年) 通向鎮江和南京的港口的開放，便利了貿易增長，無錫縣成為了全國紡織工業的中心。1894 年 (光緒二十年) 開始初現大規模的紡織工廠，1904 年 (光緒三十年) 開始建立機器操作纜絲和絲織品工廠。無錫縣也是穀物的水路運輸區域樞紐。

1937 年 2 月 27 日，吳縣扶輪社 (Soochow Rotary Club) 社員到無錫旅遊，無錫籍社員蔡稚岑邀請了 16 位當地社區領袖加入聚會。宴會中，吳縣扶輪社鼓勵在無錫成立新的扶輪社。所有出席者對該提案均表示同意，並要求吳縣扶輪社輔導。1937 年 3 月 12 日，臨時扶輪社成立。1937 年 4 月 11-13 日，國際扶輪第 81 地區第二屆年會在南京召開，無錫臨時扶輪社的 16 名成員參加了會議，受到了高度讚賞。1937 年 5 月 5 日，無錫扶輪社組織成立，名單上有 24 名創社社員，李克樂當選創社首席副社長 (圖見第 6 頁)。李克樂是無錫普仁醫院創建者兼院長 (Superintendent, St. Andrew's Hospital)，他的扶輪職業分類為「醫院業」(Hospital)。然後，正式的會員資格申請，通過第 81 地區總監鄺富灼博士發送給國際扶輪。無錫扶輪社決定在每個星期三的下午 6 點定期舉行例會，會場位於無錫縣石皮巷三號慶豐紡織印染廠的所在地。

1937 年 6 月 16 日，無錫扶輪社獲正式選舉為國際扶輪成員，授予證書第 4321 號。如果不是在預定的授證典禮前一個月爆發戰爭，無錫扶輪社將會成為一個健全的扶輪社。但是，儘管如此，在組織和成立的那個時期，它還是非常活躍的。遺憾的是，在無錫扶輪社收到證書和準備舉行授證典禮之前，日本侵華戰爭爆發。這是日本帝國主義對中華民國的全面侵略，從 1937 年 7 月 7 日直到 1945 年 9 月 2 日日本戰敗投降。侵略始於河北省宛平縣蘆溝橋事件引發的軍事衝突，日本與中國軍隊之間的爭端升級為戰鬥。在幾個月內，日本軍隊迅速佔領了中國北部和東部所有重要的港口和工業中心，包括國家首都南京和附近的無錫縣。這些地區的扶輪活動即時受到嚴重干擾和破壞，導致扶輪社暫停或休會。因此，許多社員也成為「難民」流放，暫時避難在上海公共租界或英國殖民地的香港居住。在那個時期，這兩個地方仍然是英國和/或美國掌管的地區，意味著這是 1941 年 12 月太平洋戰爭爆發前的「安全區」。

無錫縣淪陷，無錫扶輪社變成了「難民社」之一。二十四名社員當中，18名移居上海，1人移居天津，1位移居美國，僅4人留在無錫。李克樂留在無錫，繼續管理醫院為傷病提供治療，這是他的專業義務和責任。一年多了，授證典禮仍然沒有舉行的機會。戰爭局勢繼續發展，甚至更糟。1941年12月，日本帝國對美國及其盟國宣戰。結果，國際扶輪決定於1943年12月31日正式終止被日軍佔領的中國領土上所有扶輪社的會員資格。

但是，李克樂的扶輪生涯和他所創辦的無錫扶輪社並沒有完全結束。1945年8月，第二次世界大戰以中華民國等同盟國勝利宣告結束，日本帝國戰敗投降。1947年3月16日，李克樂與其他24名前扶輪社員和新成員一起聚在無錫，宣布成立臨時扶輪社。李克樂再次當選創社副社長，職業還是一樣——無錫普仁醫院院長，扶輪職業分類為「醫院業」。4月8日，國際扶輪再次承認無錫扶輪社為會員，授予證書第4321號。遺憾的是，同年10月李克樂因妻子患心臟病，不得已引退，李克樂伉儷從此離開服務了40年的中國，返回美國。

1949年10月1日，中華人民共和國建政。1950年6月25日爆發朝鮮戰爭，中國與美國敵對，與美國的通信中斷。結果，國際扶輪決定於1950年12月21日正式終止無錫扶輪社的會員資格，此後扶輪在無錫給完全畫上了句號。

無錫第一所西醫院創建者兼院長

無錫市檔案館珍藏有無錫普仁醫院的一些舊照，一百多年前，美國醫療宣教士李克樂博士到無錫縣創辦了普仁醫院。其後的40年間，李克樂與普仁風雨相伴，將一個僅有3名職員的簡易診所發展為當時錫城獨領風騷的正規化醫院。教育家唐文治在《美國李克樂先生紀念碑》碑文中寫道：「若夫異邦之士，來中國創醫院，德澤普及四方者，則惟李博士為最。」

飄洋過海來中國

1906年(清光緒三十二年)3月，時年24歲的李克樂攜同新婚不久的妻子史曼麗(Mary Willoughby Duke Lee)，飄洋過海踏上了大清國的土地。這個遙遠而神秘的東方國度成為其生命旅程中最重要的一站，並在此度過了40年的時光。

李克樂，1882年6月17日生於美國維珍尼亞州(Hume, Fauquier County, Virginia, U.S.A.)。1900年進入維珍尼亞大學(University of Virginia, UVA)醫學院攻讀，1905年獲得醫學博士學位，畢業後在美國芝加哥海軍醫院(Naval Station Great Lakes Hospital, Chicago)實習。1906年3月，李克樂受到美國聖公會的派遣到大清國江蘇省以醫療宣教，目的是在無錫縣創辦醫院，先在蘇州華語學校學習華語一年。

早前無錫聖公會會長慕高文(Gouverneur Frank Mosher)想通過開辦醫院來輔助傳教，於1903年在無錫孤老院巷的三間平屋內開設了一個門診所。慕高文會長請求上海教區派人到無錫，李克樂正是由郭斐蔚主教(Bishop Frederick Rogers Graves)指派到無錫創辦醫院的。

1907年3月，李克樂抵達無錫籌建醫院。初來無錫，人生地疏。為了方便工作，李克樂儘量與當地士紳接觸，尤與楊維翰最為熟稔。楊維翰是蘇州博習醫院(Soochow Hospital)的首屆畢業生，1890年就在無錫南門外開業，為無錫僅有的一名設立私人診所的西醫。在楊維翰的幫助下，李克樂一面積極籌備新診療所的各種事項；一面經錫城舉人俞仲還介紹，先在百歲坊巷租賃

一間舊屋行醫。當年用紅汞治療外症，用灌腸辦法搶救吞服生鴉片自殺的病人。因治法新穎，療效顯著，一時轟動全城。

1908年，在地方士紳合作下，選址二下塘(現中山南路)、南市橋附近租得土地 1.625 畝。通過教會撥款，興建了一所三開間的門診所。正中一間是藥房，兩旁是男女候診室及診察室。女診察室後面一小間是手術室和換藥室；男診察室後面一小間是注射室；大門口的傳達室又作掛號室。診所共有 3 名醫師，設立 5 張簡易病床，李克樂擔任院長。當時無錫聖公會會長慕高文擬通過開辦醫院輔助宣教，因教會禮拜堂稱聖安德魯教堂(St. Andrew's Church)，遂將診所英文名稱以基督教聖人命名為「St. Andrew's Dispensary」，中文名稱為「聖公會普仁診所」。3月16日診所落成舉行開業典禮，無錫、金匱兩縣知事，諸邑紳及上海聖公會主教都前來祝賀。

日益完善的普仁醫院

之後，診療所改為「普仁醫院」(St. Andrew's Hospital)。普仁醫院作為當時無錫唯一的醫院，其業務量相當繁重。每年平均診治病員數多達 2 萬餘人次，無論是醫療人員、醫療設備還是病房都極其短缺。李克樂除處理全院行政事務外，還要巡查病房、做手術、接產、看特號門診和出診。

在此艱難的條件下，李克樂克服種種困難，逐步發展醫院的各項事務。1912年，聖公會募得美國教徒捐款，為醫院建造新病房。院方邀請上海聖約翰大學的畢克先生設計督造，至 1913 年建成，為當時無錫最新穎的建築。新病房是一座二層樓房，設有四間普通病室及四間特別病室，共有床位 60 張。(圖見第 8 頁)

醫院的各種設施及器械設備也日趨完善，新病房後面又建造了手術室、X光室等，醫療條件得以改善。新設的手術室環境較前大有改善，從而能在潔淨的環境中施行手術，建成一年內共施行了 200 多次手術。李克樂兼外科負責人，是無錫地區最早開展西醫外科手術的醫師之一。一年之內共施行全身麻醉手術 66 次；以闌尾切除、腸穿孔剖腹術、股疝修補、宮外孕剖腹術等下腹部手術和上下肢外科手術為主。他對醫療一絲不苟，獲得醫界好評。

1914年，美國聖公會醫療宣教士龐安妮護士(Annie Brown)來院主持護理工作。為解決護理人員緊缺的問題，於 1918 年創辦普仁醫院護士學校(St. Andrew's Hospital School of Nursing)(即如今的江蘇省無錫衛生高等職業技術學校的前身)，龐安妮任校長。另一方面，李克樂亦多方聘請各科醫師。在此後的十幾年間，醫院進入一個發展時期，醫務人員逐漸增加，配備齊全。

1918年第一次世界大戰後期，李克樂奉美國紅十字會派遣，赴西伯利亞捷克軍第 8 聯隊任少校軍醫。1919 年大戰結束後，重返普仁醫院任院長。當年夏天，錫地城鄉霍亂盛行。醫院搭起蘆葦棚救治病人，使用鹽水注射。治癒了很多病人，名聲鵲起。

1931年，普仁醫院購買了全市第一台西門子X光機，醫院興建新病房樓。1933年3月竣工，正值建院 25 周年紀念日，醫院舉行隆重的慶祝活動。新病房樓一樓為外科病房，二樓為內科病房，三樓為護士學校教室，全院床位擴至 115 張。

1936年，李克樂成功開展了錫城首例胸廓成形手術。

普仁醫院的守護者

1937年7月，抗日戰爭全面爆發。10月，錫城屢遭日本空軍轟炸。有一枚炸彈落入醫院，幸未爆炸。醫院無法繼續開展工作，即宣佈解散，關門停業，僅由李克樂留守。不久受令離院赴上海和南京，參加其他醫療服務。1938年夏天，李克樂返回錫城。8月恢復門診，由李克樂獨自應診。復業不久醫務人員陸續返院工作，至1940年醫院工作恢復水準，門診人次多達3萬多。同年設立眼科，是市屬綜合醫院中最早的。

1941年12月太平洋戰爭爆發，日本和美國交戰。因普仁醫院為美國財產，受日本憲兵管理，派兵駐守，李克樂行動受到限制。唐文治所寫紀念碑文中亦有提及，「博士為敵拘禁於其宅內，歷四月餘」。

1942年4月，李克樂被日軍押送去上海，6月搭乘交換僑民的「格里斯普霍爾姆號」郵輪(S.S. Gripsholm)返回美國。這也是李克樂伉儷離開無錫時間最長的一次，達5年之久。30多年來，李克樂與普仁醫院共歷風雨，李克樂在普仁的歷史上留下了深深的烙印。

1945年8月14日，第二次世界大戰以同盟國勝利宣告結束，日本帝國宣佈願意接受無條件投降。1947年1月，李克樂攜夫人由美國回無錫復任院長。在普仁醫院40周年慶典時，無錫官紳認為李克樂在錫行醫達40載，對無錫人民作出了貢獻，特推李克樂為「無錫榮譽公民」。10月間，夫人突發心絞痛，李克樂即向上海教區主教羅培德(Bishop William Payne Roberts)遞呈辭職申請，決定返回美國。10月20日，醫院召開歡送大會，無錫縣縣長授予他「無錫縣榮譽公民證書」。10月23日，全體醫師護士聚集在火車站歡送李克樂伉儷。臨走之前，李克樂邀請醫院的主要醫師、護士在他的住宅內舉行惜別茶話會，並和全院職工一起攝影留念。還捐獻個人存在上海聖公會會計處的二千美元，資助醫院的三名醫師赴美國進修。

1967年12月20日李克樂在美國安息主懷，享年85歲，安葬在維珍尼亞州里士滿縣華沙的聖約翰主教座堂公墓(Saint John's Episcopal Church Cemetery, Warsaw, Richmond County, Virginia, U.S.A.)。

1949年10月1日中華人民共和國建政，1951年10月12日，普仁醫院由人民政府接管。當時醫院有床位106張，職工97人，為享譽錫城地區的最大的一所醫院。同年11月，醫院更名為「蘇南公立無錫醫院」。1954年12月，醫院更名為「無錫市第二人民醫院」，延續至今。2013年，無錫市編制辦公室正式發文，同意無錫市第二人民醫院增掛「無錫普仁醫院」牌子。同時，鑒於無錫二院在醫界的影響力和精湛的醫療技術水準，市醫院管理中心也發文同意設立「無錫二院普仁國際醫療區」。

1908年創立的小型診所，如今已經發展為無錫市著名的醫療中心。李克樂創辦普仁醫院距今已有一百多年，雖時過境遷，然而與普仁這段深厚的淵源已載入史冊，其善行亦為世人所稱道。

